

Investment philosophy

1618 Investment Funds - Bond Euro is a SICAV incorporated in Luxembourg. The Fund's objective is to obtain a total return greater than the EUR bond markets via actively managed strategy. The Fund invests at least 50% in negotiable EUR debt instruments issued by a government and/or companies with an investment grade rating. The remaining assets can be invested in non investment grade bonds.

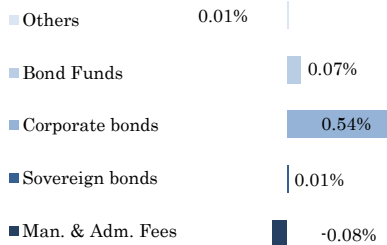
Return & risk metrics (data since October 2011)

NAV price	232.53
Annualised return	1.2%
Cumulative return	11.1%
Best month	1.4%
Worst month	-1.6%
Volatility	2.6%
Sharpe ratio	0.38
Value At Risk (95%,1M)	-1.2%
Fund Yield	1.8%
Fund duration	3.1
Total Position	97

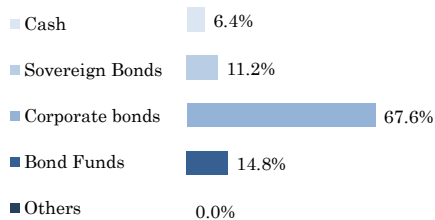
Top holdings

JPM Global Convertibles	2.5%
LYXOR EuroMTS 1-3Y Invest. Grade	2.3%
LYXOR EuroMTS 3-5Y Invest. Grade	2.3%
UBS AG, 4.75%, 2026	2.1%
GAM STAR CREDIT OPPORTUNITIES	1.6%

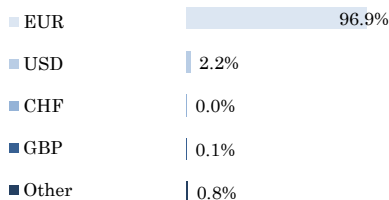
Monthly performance contribution



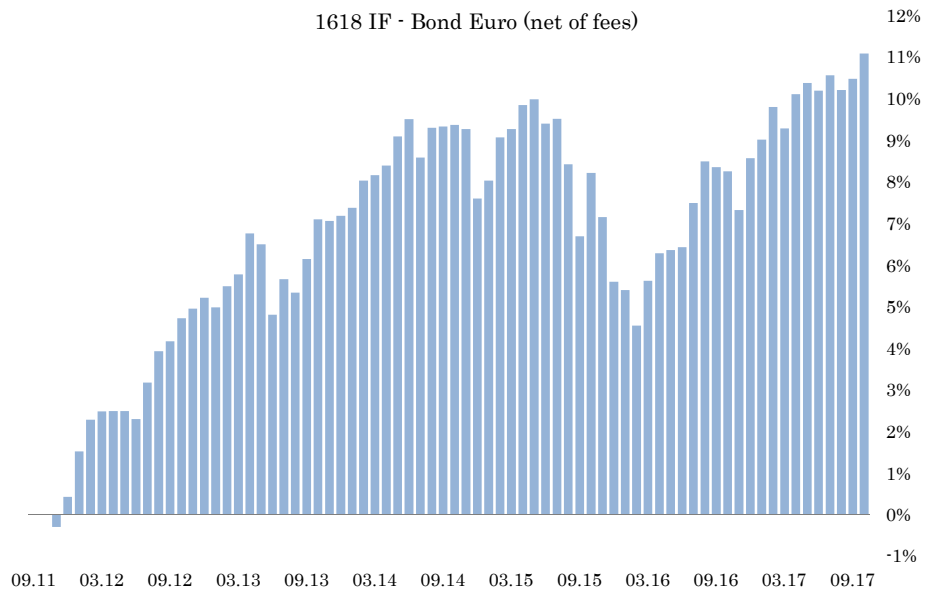
Asset allocation



Currency exposure



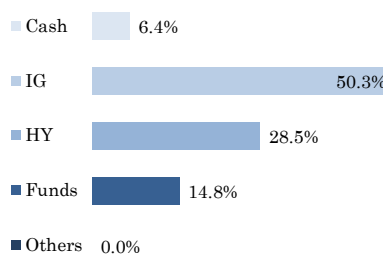
Cumulative net return



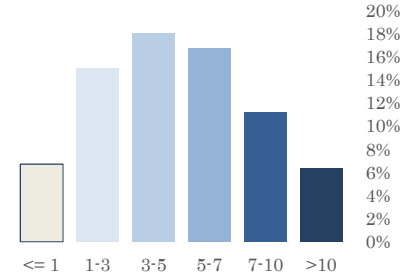
Monthly Returns

	Jan	Feb	Mar	Apr	May	Jun	Jul	Aug	Sep	Oct	Nov	Dec	YTD
2011										0.01%	-0.30%	0.72%	0.43%
2012	1.09%	0.75%	0.20%	0.01%	0.00%	-0.19%	0.86%	0.73%	0.23%	0.54%	0.22%	0.25%	4.77%
2013	-0.22%	0.48%	0.27%	0.93%	-0.25%	-1.59%	0.82%	-0.31%	0.77%	0.90%	-0.04%	0.11%	1.87%
2014	0.18%	0.61%	0.12%	0.22%	0.64%	0.38%	-0.84%	0.66%	0.03%	0.04%	-0.10%	-1.53%	0.39%
2015	0.40%	0.96%	0.18%	0.53%	0.12%	-0.53%	0.11%	-1.00%	-1.59%	1.43%	-0.98%	-1.45%	-1.86%
2016	-0.19%	-0.82%	1.03%	0.63%	0.07%	0.06%	1.00%	0.93%	-0.13%	-0.09%	-0.86%	1.16%	2.81%
2017	0.41%	0.72%	-0.47%	0.75%	0.24%	-0.16%	0.33%	-0.32%	0.24%	0.55%			2.31%

Bond rating



Maturity schedule (in years)



General information

ISIN	LU0041781229	Custodian	BDL, Luxembourg
Bloomberg	PLEECBI LX	Adm.	EFA, Luxembourg
Liquidity	Weekly (cut off Wednesday 6pm)	Auditor	KPMG Audit, Luxembourg
Min. investment	0	Type	UCITS
Management fees	0.70%		

The material presented above are provided to you at your request and informational purposes only. This material is for your private information only and we are not soliciting any action based upon it. It is not to be construed as an offer to sell or the solicitation of an offer to buy any investment product. The market valuation, terms and calculations contained herein are estimates only. Over time, there may be changes to the information currently supplied in this document. We take no responsibility for amending or correcting any previously supplied information. This document is based upon information that we consider reliable, but we do not represent that it is accurate or complete, and it should be relied upon as such. Past performance is not indicative of future results.