

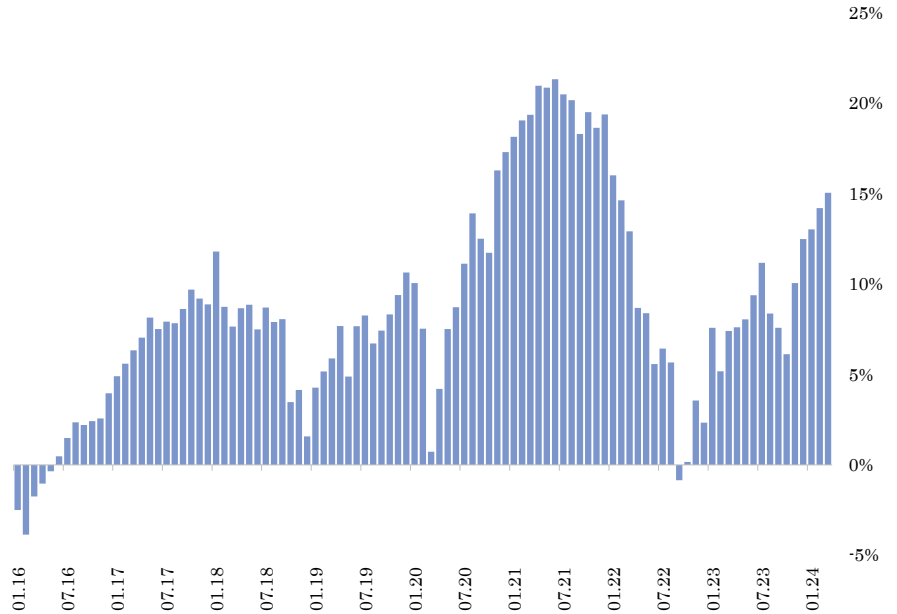
Investment philosophy

The 1618 Investment Funds - World Balanced's strategy follows the investment philosophy of Compagnie Bancaire Helvétique. The fund is active in bond and equity markets but will also be able to hedge positions if market conditions ask for protective moves.

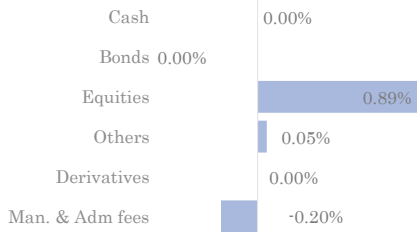
Return & risk metrics (data since January 2016)

NAV price (€)	101.07
Cumulative return	15.0%
Annualised return	1.7%
Best month	5.1%
Worst month	-6.3%
Volatility	6.3%
Sharpe ratio	0.24
Value At Risk (95%,1M)	-3.0%
Max draw down	-18%
Average fund duration	2.24
Average fund yield	1.85%

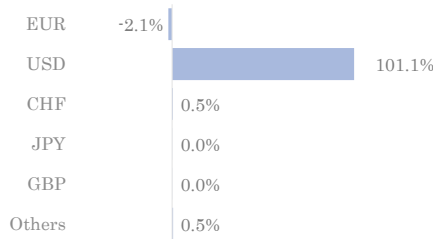
Cumulative net return



Monthly contribution



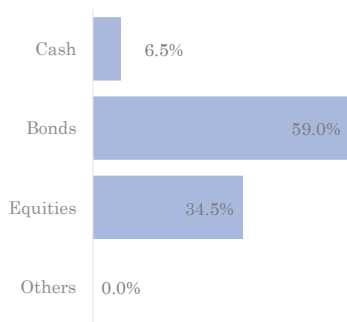
Currency allocation



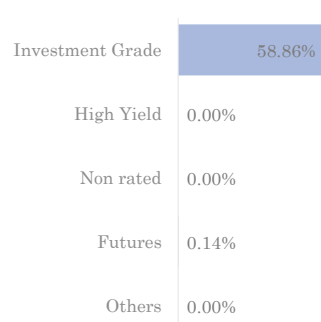
Monthly net returns

	Jan	Fev	Mars	Apr	May	June	Jul	Aug	Sep	Oct	Nov	Dec	YTD
2016	-2.5%	-1.4%	2.2%	0.7%	0.7%	0.8%	1.0%	0.9%	-0.1%	0.2%	0.1%	1.4%	4.0%
2017	0.9%	0.7%	0.7%	0.7%	1.0%	-0.6%	0.4%	-0.1%	0.7%	1.0%	-0.5%	-0.3%	4.7%
2018	2.7%	-2.7%	-1.0%	0.9%	0.2%	-1.3%	1.1%	-0.7%	0.1%	-4.2%	0.6%	-2.5%	-6.7%
2019	2.7%	0.9%	0.7%	1.7%	-2.6%	2.7%	0.5%	-1.4%	0.7%	0.8%	1.0%	1.1%	8.9%
2020	-0.5%	-2.3%	-6.3%	3.4%	3.2%	1.1%	2.2%	2.5%	-1.2%	-0.7%	4.1%	0.9%	6.0%
2021	0.7%	0.8%	0.3%	1.3%	-0.1%	0.4%	-0.7%	-0.3%	-1.6%	1.0%	-0.7%	0.6%	1.8%
2022	-2.8%	-1.2%	-1.5%	-3.8%	-0.3%	-2.6%	0.8%	-0.7%	-6.2%	1.0%	3.4%	-1.2%	-14.3%
2023	5.1%	-2.2%	2.1%	0.2%	0.4%	1.2%	1.6%	-2.5%	-0.7%	-1.4%	3.7%	2.2%	9.9%
2024	0.5%	1.0%	0.7%										2.3%

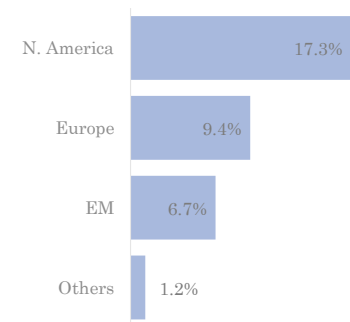
Asset allocation



Bond allocation



Equity allocation



General information

ISIN	LU0229465447	Management fees	1.5%	Auditor	KPMG Audit, Luxembourg
Bloomberg	PLPRVIN LX	Custodian	SGBT, Luxembourg	Type	UCITS
Liquidity	Weekly (cut off Wednesday 6 pm)	Administrator	Lemanik, Luxembourg		

Disclaimer

The material presented above are provided to you at your request and informational purposes only. This material is for your private information only and we are not soliciting any action based upon it. It is not to be construed as an offer to sell or the solicitation of an offer to buy any investment product.

The market valuation, terms and calculations contained herein are estimates only. Over time, there may be changes to the information currently supplied in this document. We take no responsibility for amending or correcting any previously supplied information.

This document is based upon information that we consider reliable, but we do not represent that it is accurate or complete, and it should be relied upon as such. Past performance is not indicative of future results.

Information for investors in Switzerland

The state of the origin of the Fund is Luxembourg.

The Representative in Switzerland is ACOLIN Fund Services AG, Affolternstrasse 56, CH-8050 Zurich.

The Paying Agent is CBH - Compagnie Bancaire Helvétique S.A., boulevard Emile-Jaques-Dalcroze 7, CH-Geneva.

The prospectus, the statutes, the key investor information as well as the annual and semi-annual reports may be obtained free of charge at the registered office of the Swiss Representative.

The current document is intended for information purposes only and shall not to be used as an offer to buy and/or sell shares. In case where the performance data are included in the current document, past performance is no indication of current or future performance. The performance data do not take account of the commissions and costs incurred on the issue and redemption of units.